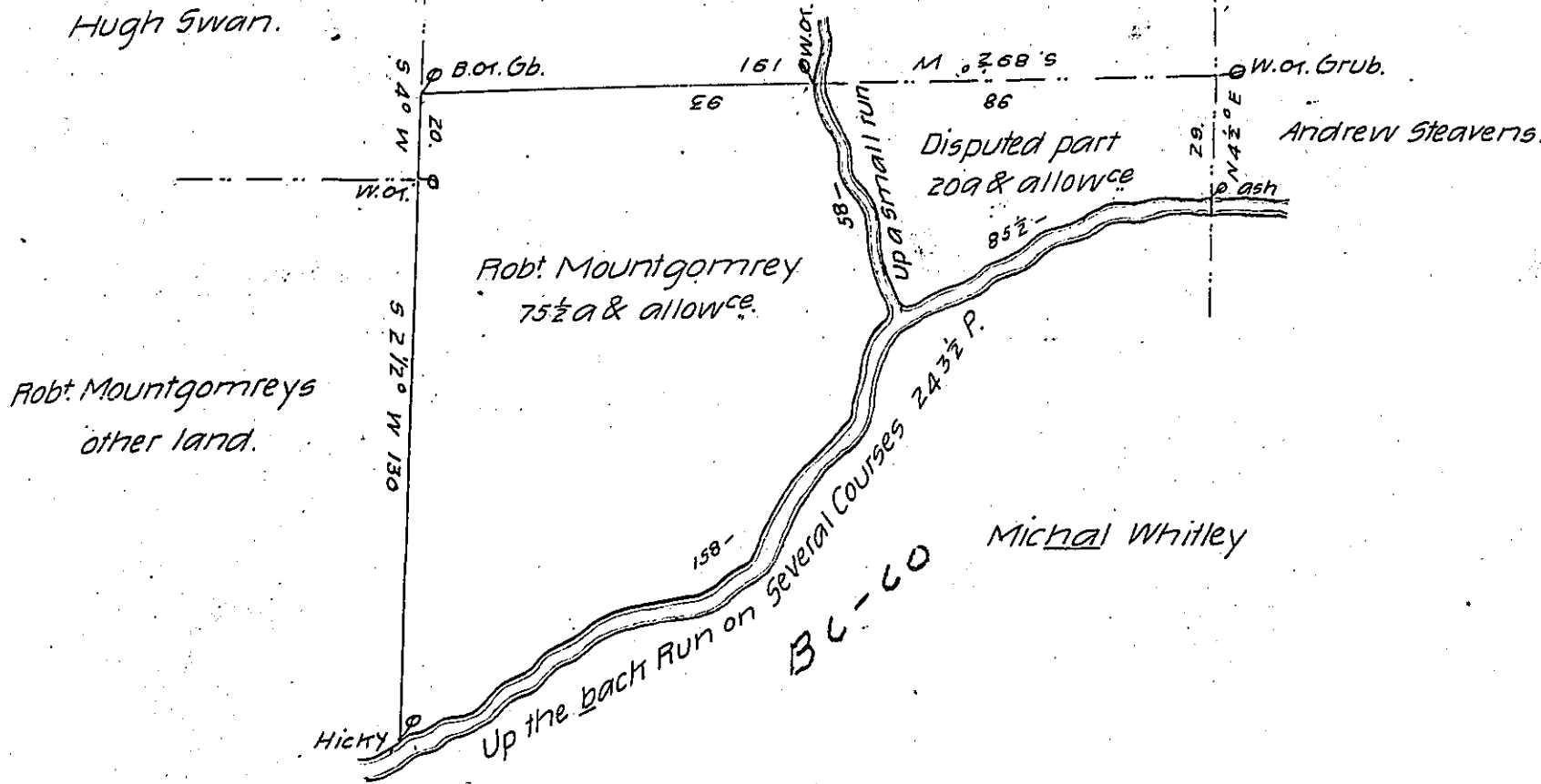


C197-237

B. 20-45-

James Wallace

Hugh Swan.



Survey'd for Robt. Mountgornrey on the 10th day of December 1766 the above discribed tract of Seventy five acres & a Half & the Usual allowance of Six P Ct (as also Twinty acres & allowance disputed by James Wallace.) Situate in Paxton Town P. Lancaster County. By Warrant of the 24th day of October 1765.

P. Barrern Galbraith

To Jno. Lukens Esq:
Surv: Genl

IN TESTIMONY that the above is a copy of the original remaining on file in the Department of Internal Affairs of Pennsylvania, made conformably to an Act of Assembly approved the 16th day of February, 1833, I have hereunto set my Hand and caused the Seal of said Department to be affixed at Harrisburg, this twenty ninth day of November 1905

[Signature]
Secretary of Internal Affairs.

